



•Thank you for purchasing the KOSO heated grip switch. Before installing, please read the instruction carefully and keep it for future reference.

## ⚠ ATTENTION!

- 1.For installation, please follow the steps described in manual. Any damage caused by wrong installation shall be imputed to the users.
- 2.Do not disassemble or change any parts excluding the manual description.
- 3.The interior examination or maintenance should be executed by our professionals.

### ◎ MARK MEANING:

**NOTE** You could get the installation details from the information behind the mark.

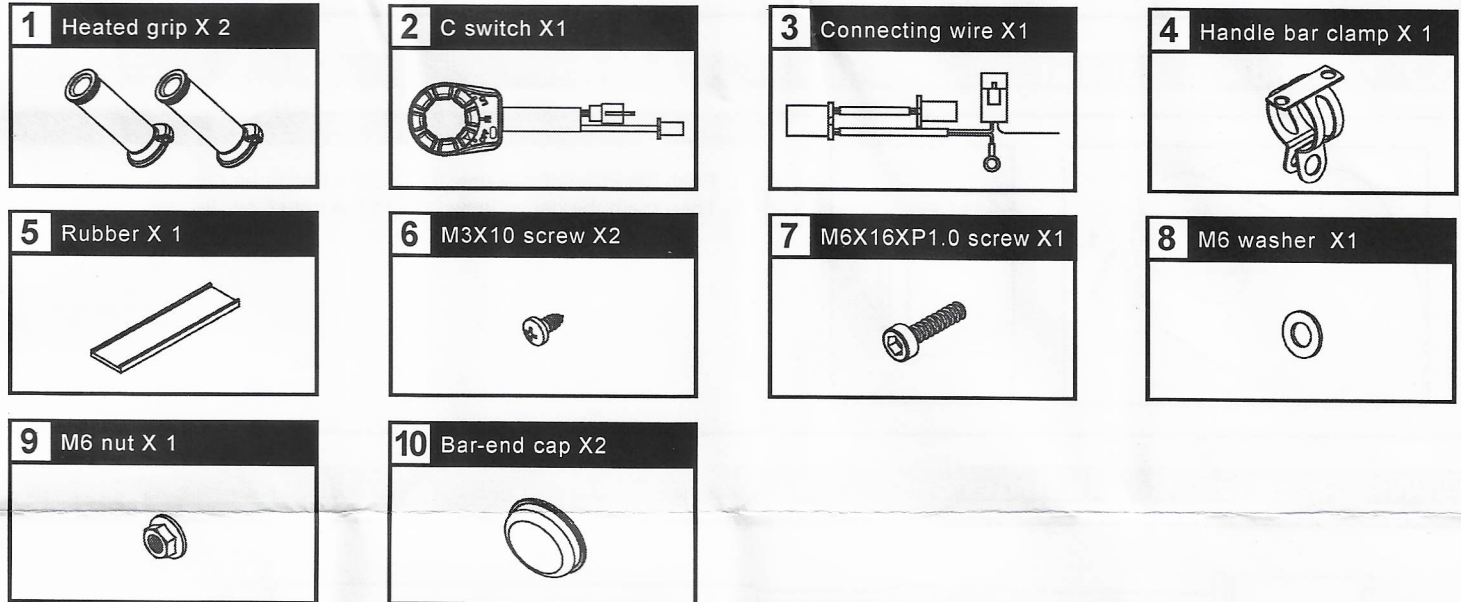
⚠ Some processes must be followed to avoid the affection caused by wrong installation.

**WARNING!** Some processes must be followed to avoid damages to yourself or the public.

**CAUTION!** Some processes must be followed to avoid the damage to the vehicle.

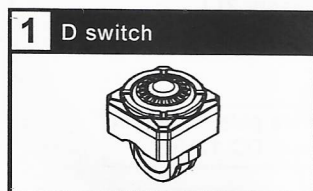
**READ CAREFULLY!** If any information dealt with in the manual remains unclear seek professional assistance.

## 1-1 Accessories



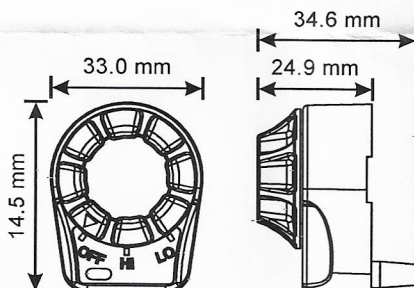
**NOTE** Please contact your local distributor if the items received are not the same as the one listed above.

## 1-2 Optional Accessories



**NOTE** Some of these items may not sell in particular area, for more information, please contact with our local dealer.

## 2 Specifications



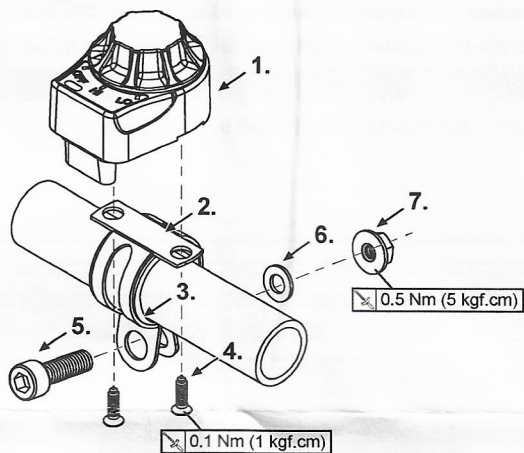
- |                             |  |
|-----------------------------|--|
| ● HI (START)                | Heating time : 10min→60°C : 30min→85°C<br>Top steady heat : 85°C ± 5°C<br>Indoor temperature : 25°C<br>Voltage : 13.5V<br>Current : 2.8A |
| ● LO (ON)                   | Heating time : 10min→35°C : 30min→45°C<br>Top steady heat : 45°C ± 5°C<br>Indoor temperature : 25°C<br>Voltage : 13.5V<br>Current : 0.7A |
| ● Voltage                   | DC12V  |
| ● Switch size               | W42.8 X L26.8 X H14.9 mm   |
| ● Switch weight (with wire) | About 57.8 g   |

**NOTE** Heat - 60°C ± 1°/hr : Cold - 30°C ± 1° /hr.

**NOTE** Design and specifications are subject to change without notice!



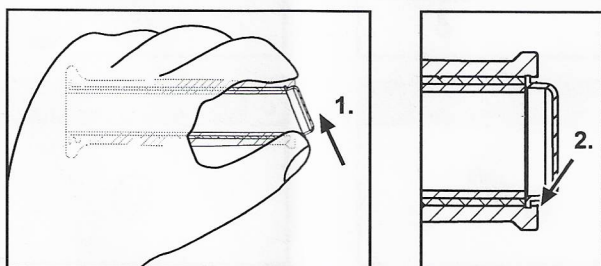
### 3-1 Installation instruction



#### Installation steps

1. C switch (Accessory 2)
2. Handle bar clamp (Accessory 4)
3. Rubber (Accessory 5)
4. M3X10 screw (Accessory 6)  $\times 0.1 \text{ Nm (1 kgf.cm)}$
5. M6X16XP1.0 screw (Accessory 7)
6. M6 washer (Accessory 8)
7. M6 nut (Accessory 9)  $\times 0.5 \text{ Nm (5 kgf.cm)}$

### 3-2 Bar-end cap installation instruction



#### Installation steps

1. Push the edge of cap upward into the trench on the side of the grip.
2. Then push the cap downward into the trench on the side of the grip.

### 4 Wiring installation instructions

